

IRDCs in the range $15^\circ \leq l \leq 55^\circ$ selected to have ^{13}CO emission peak and catalogued in the Hi-GAL 70 μm , 160 μm and 250 μm maps. Tot IRDCs: 3493

New identification and photometry source code:

- Fourier based point-source identification
- Aperture photometry on the fitted region



- IRDCs with at least one 70 μm source: 2209 (63.2 %)
- Tot 70 μm sources: 29247

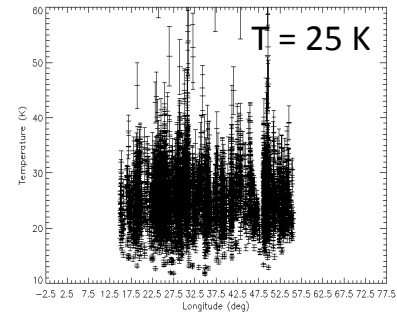
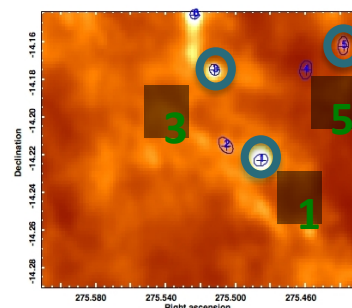
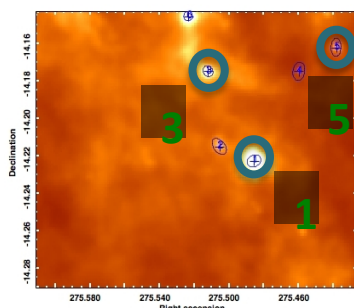
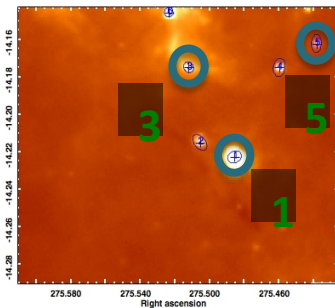
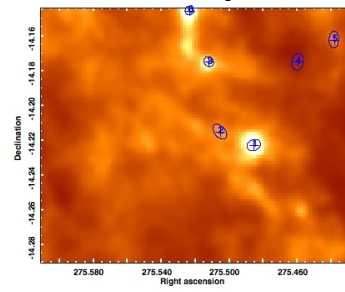
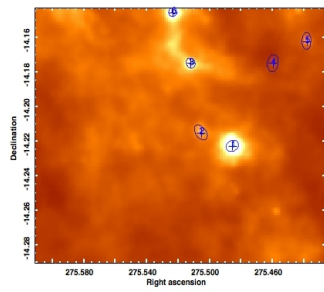
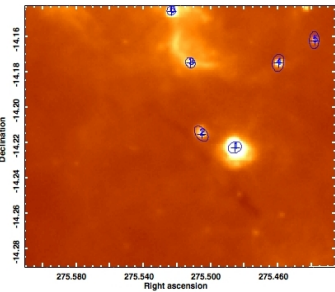


Subject to change...

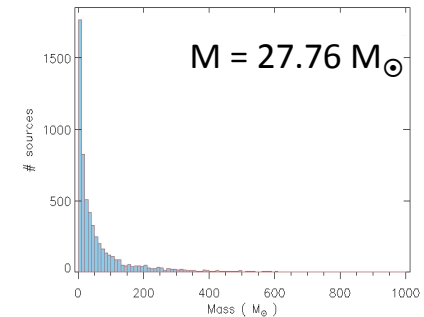
70 μm

160 μm

250 μm



Temperature distribution



Mass distribution

Temperature, mass and luminosity from SEDs ($\beta=1.8$)

$\approx 6\%$ with $M \geq 300 M_\odot$

$\approx 2\%$ with $L \geq 10^4 L_\odot$